

B-Line

B-Line S.r.l.
Via Galileo Galilei, 13/B
35030 - Sarmeola di Rubano (PD)
ITALY

T. +39 049 8978245
F. +39 049 633499
E. info@b-line.it
W. b-line.it

CROSSED

Design by Joe Colombo

CARTELLA TESSUTI / FABRIC REFERENCE CHART

CC

COTTON CLUB
FLUSKO



TCC101



TCC105



TCC108



TCC109



TCC119

FP

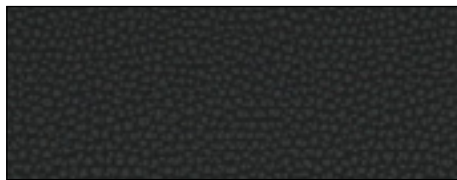
PLATINUM
FLUKSO



TFP12



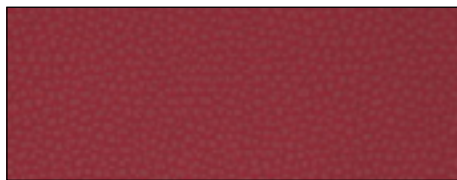
TFP22



TFP23



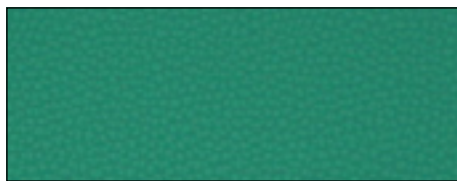
TFP27



TFP30



TFP35



TFP44

VG

GORGEOUS
FLUKSO



TVG2111



TVG2114



TVG2127



TVG2131



TVG2148



TVG2153

RX

REMIX 3
KVADRAT



TRX123



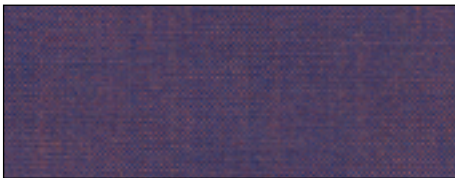
TRX196



TRX422



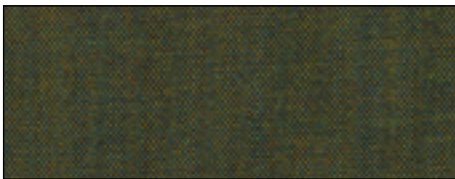
TRX566



TRX686



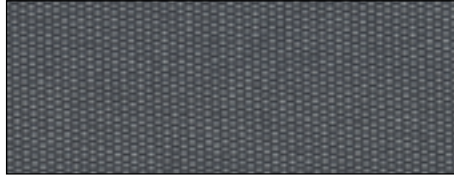
TRX716



TRX842

PT

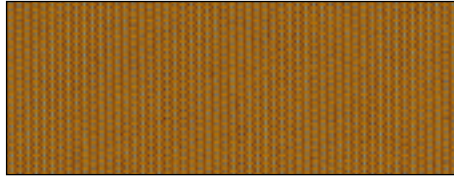
PAT 10
KVADRAT



TPT170



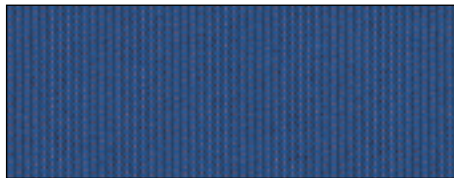
TPT210



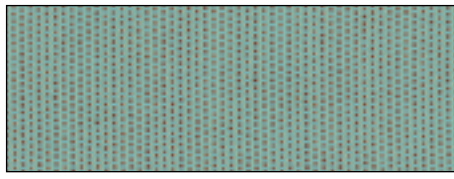
TPT450



TPT570



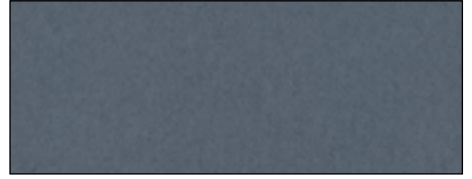
TPT750



TPT840

HE

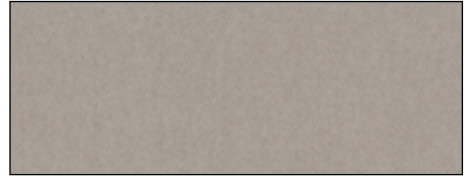
HERO 2
KVADRAT



THE152



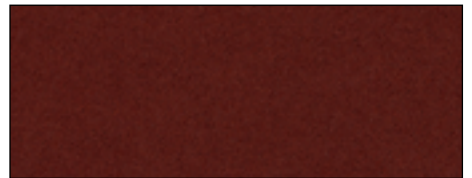
THE162



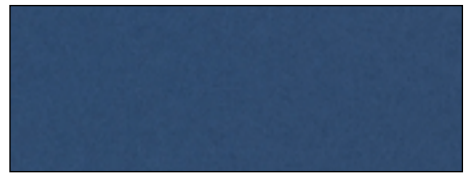
THE212



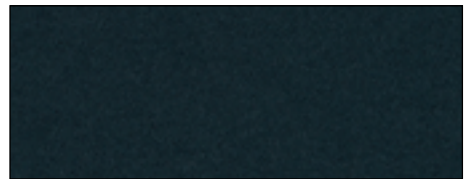
THE542



THE582



THE752



THE882

ST

STEELCUT TRIO 3
KVADRAT



TST213



TST453



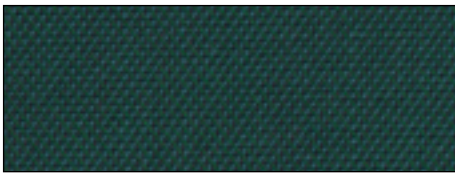
TST576



TST796



TST806



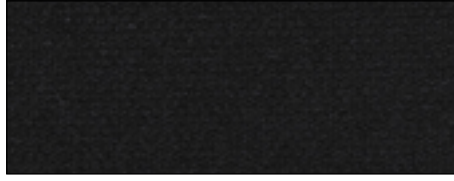
TST976



TST983

SC

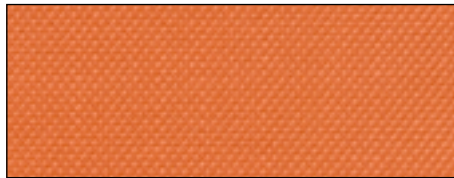
STEELCUT 3
KVADRAT



TSC190



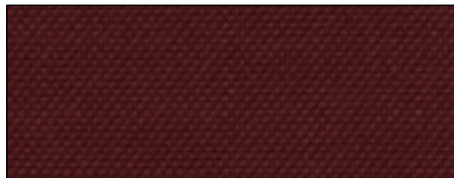
TSC240



TSC522



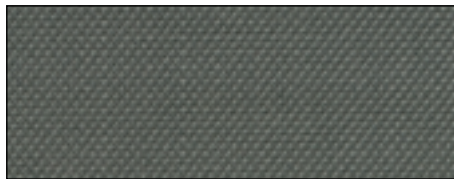
TSC605



TSC682



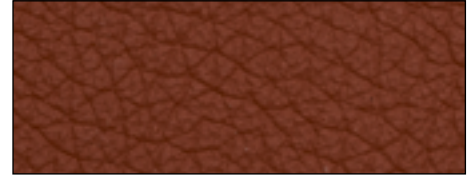
TSC780



TSC922

LN

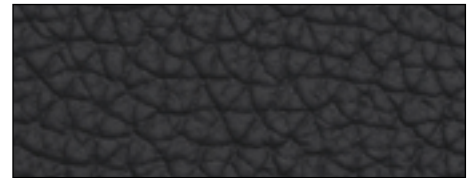
PANAMA
DANI



LN5080



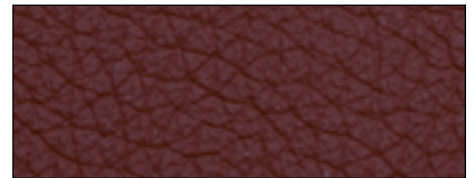
LN5300



LN5310



LN5428



LN5460



LN5506

**SPECIFICHE TESSUTI
/ FABRIC FEATURES**

CC
COTTON CLUB FLUSKO

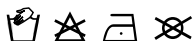
70% Cotone/ Cotton
10% Poliestere/ Polyester
10% ACR
10% AF



320 g/mq/ g/sqm

FP
PLATINUM FLUKSO

82% PVC
18% PES



650 g/mq/ g/sqm
100.000 Martindale

VG
GORGEOUS FLUKSO

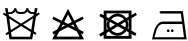
100% PES FR - Trevira CS



450 g/mq/ g/sqm
100.000 Martindale

RX
REMIX 3 KVADRAT

90% Lana vergine/ Pure wool
10% Nylon



420 g/mt/ g/lin.m
100.000 Martindale

PT
PATIO KVADRAT

100% Trevira CS

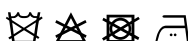


560 g/mt/ g/lin.m
50.000 Martindale

Resistenza alla luce 7/ Lightfastness 7
EN ISO 105 B04
EN ISO 105 B02

HE
HERO 2 KVADRAT

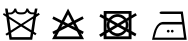
97% Lana vergine/ Pure wool
3% Nylon



580 g/mt/ g/lin.m
45.000 Martindale

ST
STEELCUT TRIO 3 KVADRAT

90% Lana vergine/ Pure wool
10% Nylon



770 g/mt/ g/lin.m
100.000 Martindale

SC
STEELCUT 3 KVADRAT

90% Lana vergine/ Pure wool
10% Nylon



825 g/mt/ g/lin.m
100.000 Martindale

LN
PANAMA DAN I

100% Pelli bovine europee/
European cow hides

sp/ thk
1,0-1,2 mm

Resistenza allo strappo/
Tear resistance
20 N | EN ISO 3377 -1

Resistenza alla flessione/
Flex resistance

Nessuna rottura in 50.000 cicli/
No damage in 50.000 cycles
EN ISO 5402 -1