

B-Line

B-Line S.r.l.
Via Galileo Galilei, 13/B
35030 - Sarmeola di Rubano (PD)
ITALY

T. +39 049 8978245
F. +39 049 633499
E. info@b-line.it
W. b-line.it

CROSSED

Design by Joe Colombo

CARTELLA TESSUTI / FABRIC REFERENCE CHART

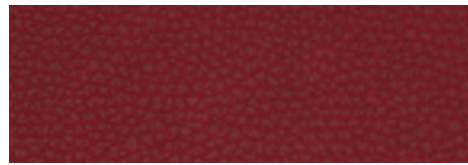
FP PLATINUM FLUKSO
82% PVC
18% PES



TFP5



TFP12



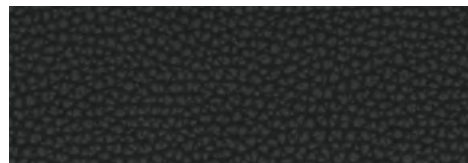
TFP30



TFP15

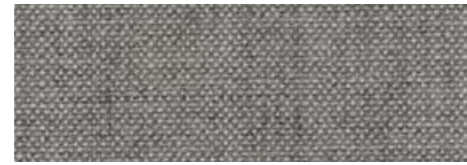


TFP22



TFP23

RX REMIX 3 KVADRAT
90% Lana vergine / New wool
10% Nylon



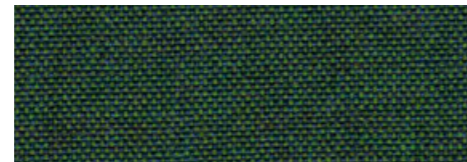
TRX123



TRX242



TRX653



TRX982

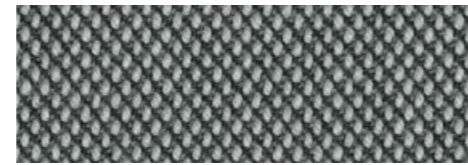


TRX762



TRX173

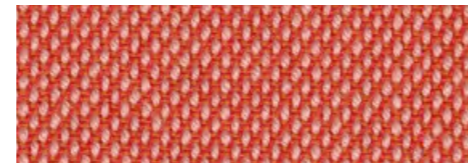
ST STEELCUT TRIO 3 KVADRAT
90% Lana vergine / New wool
10% Nylon



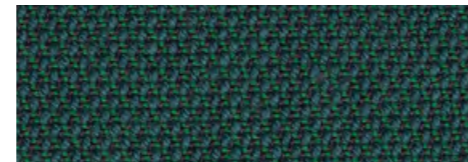
TST133



TST205



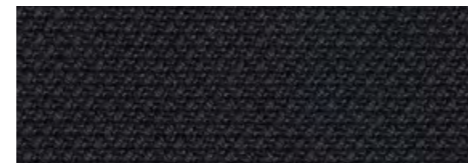
TST526



TST976



TST716

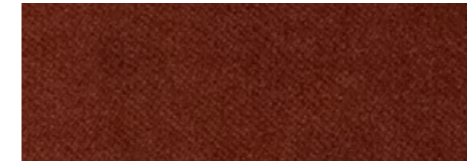


TST195

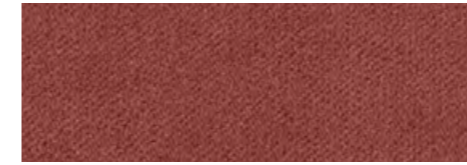
VG GORGEOUS FLUKSO
100% PES FR – Trevira CS



TVG2153



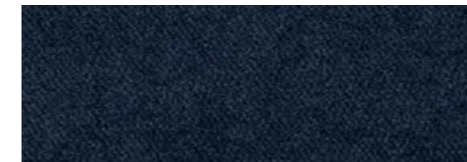
TVG2112



TVG2113



TVG2131



TVG2128

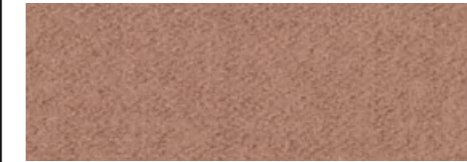


TVG2148

HE HERO KVADRAT
96% Lana vergine / New wool
4% Nylon



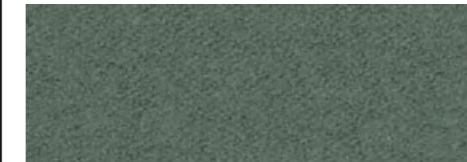
THE211



THE311



THE541



THE931

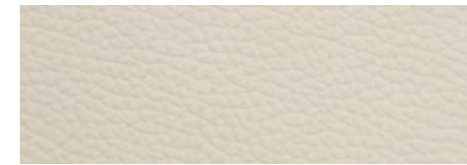


THE711



THE791

LN PANAMA DANI
100% Pelli bovine europeae /
European cow hides



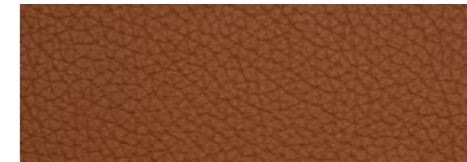
LN5506



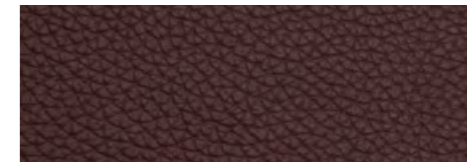
LN5320



LN5210



LN5080









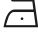





















LN5220



LN5300

**SPECIFICHE TESSUTI
/ FABRIC FEATURES**

Platinum Flukso	Remix 3 Kvadrat	Steelcut Trio 3 Kvadrat	Gorgeous Flukso
650 g/mq / g/sqm 100.000 Martindale	415 g/mtl / g/lin.m 100.000 Martindale	770 g/mtl / g/lin.m 100.000 Martindale	450 g/mq / g/sqm 100.000 Martindale
			
			
			
			
			
			
			

**Hero
Kvadrat**
580 g/mtl / g/lin.m
45.000 Martindale

**Panama
Dani**
sp / thk 1,0-1,2 mm



**resistenza allo strappo
/ tear resistance
20 N I EN ISO 3377 -1**

**resistenza alla flessione
/ flex resistance**

**nessuna rottura
in 50.000 cicli
/ no damage
in 50.000 cycles
EN ISO 5402**

0575 / 15